

Description

m-swipe is a mesh filter which offers a convenient and efficient cleaning system. With a manual brush cleaning system, the operator can effortlessly clean the filter screen in just a matter of seconds, without the need to open the lid.

The vessel and cleaning system are constructed entirely from stainless steel and equipped with nylon brushes, making the filter highly durable and requiring minimal maintenance.

m-swipe is particularly well-suited for treating water that contains non-colloidal suspended solids. It is commonly used in well-water, canals, rivers, and industrial settings.

To accommodate various installation configurations, the filter is offered in two different design shapes, Y and L.



Design data

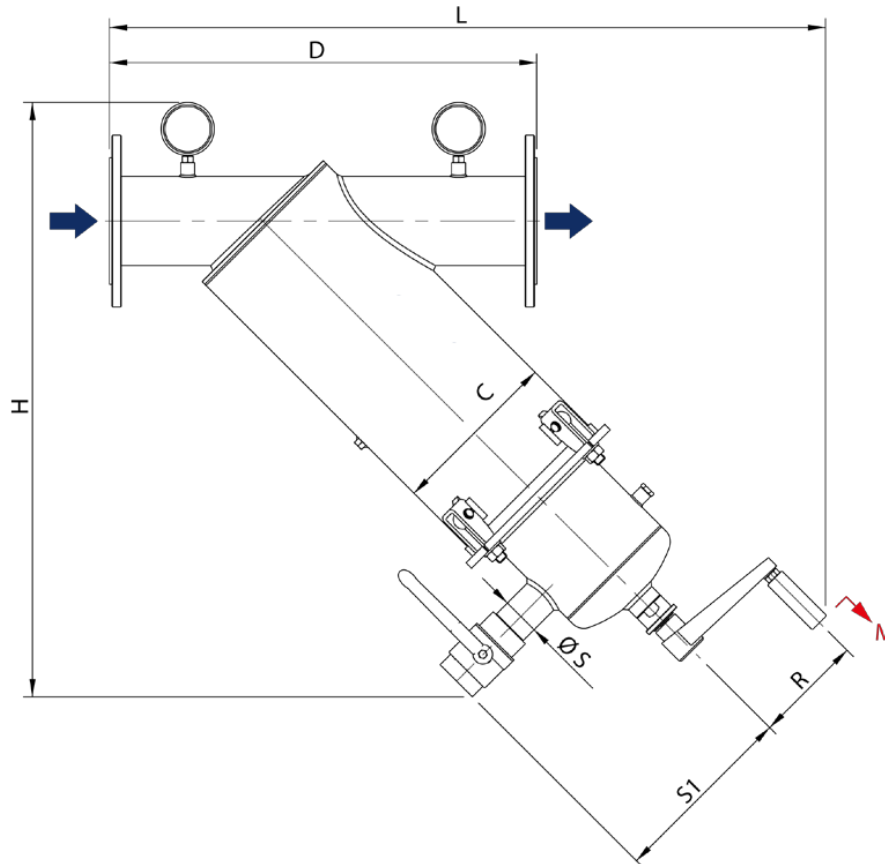
Flow rate	Up to 400 m3h
Design pressure [bar]	PN10 (PN16 available)
Design temperature [°C]	80
Salinity [TDS]	<10.000 ppm
pH Range	3 - 9
Design Code	PED 68/2014/EU

Material data

Filter housing	AISI 304/316L
Gasket	EPDM*
Filter bag	PES
Drain/Vent valve	Cast Iron body with AISI 316L lens
Pressure Gauges	AISI 304/316L
Surface finish	Micro shot Peening and Passivation

* Certified for the following European Drinking Water regulations: UBA, DVGW-standard W-270, WRAS och ACS.

Dimensions Y shape



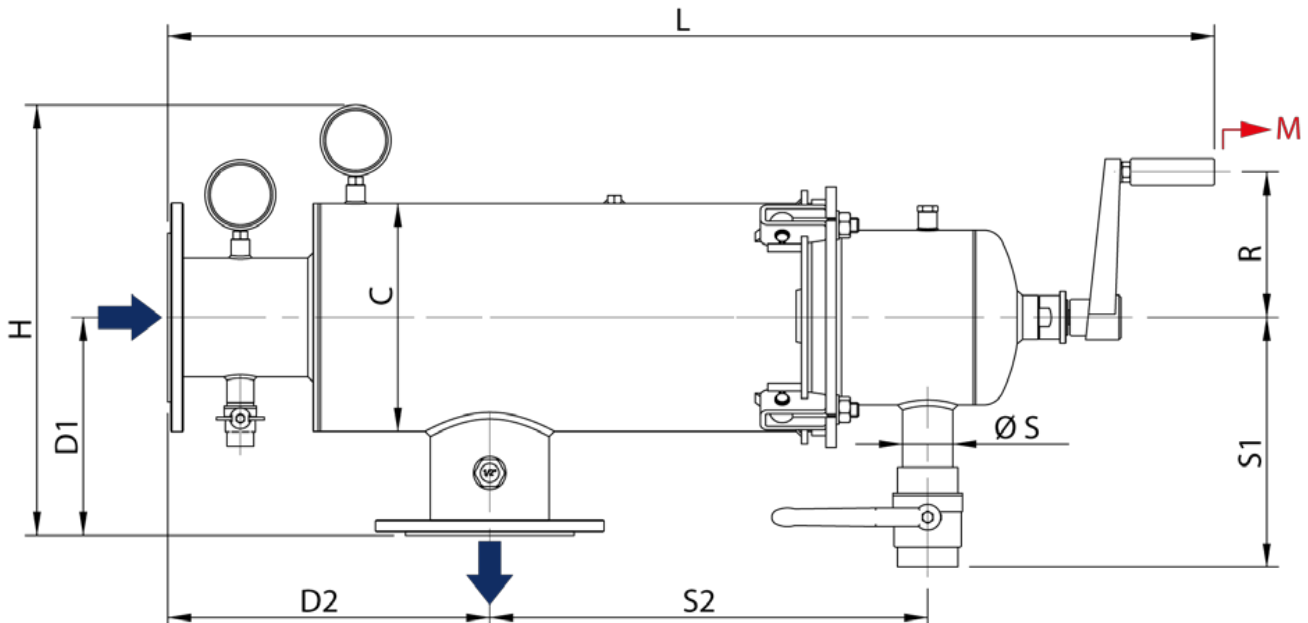
Model	Size	In/Out	Max Flow rate* [m3/h]	F.S.** [cm2]	D [mm]	L [mm]	H [mm]	C [mm]	S1 [mm]	ØS [mm]	R [mm]	M*** [mm]	W [Kg]
M-SPH 2" Y 6	6	2' BSPP	30	1500	412	740	600	219	240	1" BSPP	140	500	21
M-SPH 3" Y 6	6	3' BSPP	60	1500	464	765	615	219	240	1" BSPP	140	500	22
M-SPH 80 Y 6	6	DN 80	60	1500	487	765	615	219	240	1" BSPP	140	500	26
M-SPH 100 Y 6	6	DN100	100	1500	547	807	627	219	240	1" BSPP	140	500	28
M-SPH 3" Y 8	8	3' BSPP	70	2200	464	875	748	219	240	1" ½ BSPP	140	700	26
M-SPH 80 Y 8	8	DN80	70	2200	487	874	748	219	240	1" ½ BSPP	140	700	30
M-SPH 100 Y 8	8	DN100	110	2200	547	916	761	219	240	1" ½ BSPP	140	700	32
M-SPH 100 Y 18	18	DN100	120	3300	585	955	761	273	240	1" ½ BSPP	180	700	39
M-SPH 150 Y 18	18	DN150	240	3300	660	978	788	273	240	1" ½ BSPP	180	700	44
M-SPH 100 Y 30	30	DN100	120	5400	585	1171	978	273	255	2" BSPP	180	1000	47
M-SPH 150 Y 30	30	DN150	260	5400	660	1194	1006	273	255	2" BSPP	180	1000	52

*Max flow rates are calculated based on clean water with a filtration degree of 120µm. With the same In/Out connection and the same MAX flow rate, the larger filter will require less cleaning than the smaller one.

**F.S. = Filtering surface

***M = Minimum free space required for maintenance.

Dimensions L shape



Model	Size	In/Out	Max Flow rate* [m3/h]	F.S.** [cm2]	D1 [mm]	D2 [mm]	L [mm]	H [mm]	C [mm]	S1 [mm]	S2 [mm]	ØS [mm]	R [mm]	M*** [mm]	W [Kg]
M-SPH 2" L 6	6	2" BSPP	30	1500	190	310	854	390	219	240	268	1" BSPP	140	500	21
M-SPH 3" L 6	6	3" BSPP	60	1500	190	310	854	390	219	240	268	1" BSPP	140	500	22
M-SPH 80 L 6	6	DN 80	60	1500	210	310	854	410	219	240	268	1" BSPP	140	500	27
M-SPH 100 L 6	6	DN100	100	1500	210	310	854	410	219	240	268	1" BSPP	140	500	28
M-SPH 3" L 8	8	3" BSPP	70	2200	190	310	1008	390	219	240	422	1 1/2" BSPP	140	700	26
M-SPH 80 L 8	8	DN80	70	2200	210	310	1008	410	219	240	422	1 1/2" BSPP	140	700	31
M-SPH 100 L 8	8	DN100	110	2200	210	310	1008	410	219	240	422	1 1/2" BSPP	140	700	32
M-SPH 100 L 18	18	DN100	120	3300	246	350	1062	480	273	240	422	1 1/2" BSPP	180	700	39
M-SPH 150 L 18	18	DN150	240	3300	246	350	1062	480	273	240	422	1 1/2" BSPP	180	700	44
M-SPH 100 L 30	30	DN100	120	5400	246	350	1368	480	273	255	728	2" BSPP	180	1000	47
M-SPH 150 L 30	30	DN150	260	5400	246	350	1368	480	273	255	728	2" BSPP	180	1000	52
M-SPH 200 L 30	30	DN200	400	5400	266	350	1368	500	273	255	728	2" BSPP	180	1000	57

*Max flow rates are calculated based on clean water with a filtration degree of 120µm. With the same In/Out connection and the same MAX flow rate, the larger filter will require less cleaning than the smaller one.

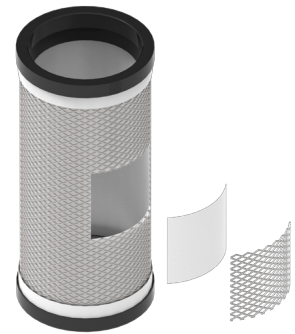
**F.S. = Filtering surface

***M = Minimum free space required for maintenance.

Filtering Elements

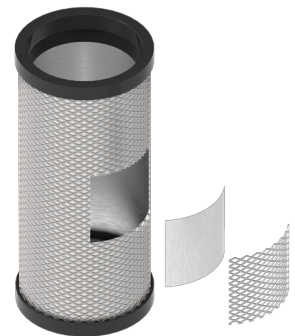
PES Filterkit:

This filter features an AISI 316 Stainless Steel cylinder that houses a polyester (PES) filter tissue. With a range of filtering options available, starting from 25µm up to 810µm, the customer has the flexibility to select the perfect filtration degree to meet their specific needs.



2LAY Filterkit:

This filter features a double layer AISI 316 stainless steel mesh and shows exceptional resistance which makes it an excellent alternative to PES Filterkit in harsh operating conditions, particularly when dealing with liquids containing sharp suspended solids.



Filtration degree [µm]	PES Filterkit	2LAY Filterkit
25 µm	✓	X
40 µm	X	✓ (only available for size 1 and 6)
53 µm	✓	X
80 µm	✓	X
110 µm	X	✓
120 µm	✓	X
200 µm	✓	✓ (not available for size 1)
400 µm	✓	X
580 µm	✓	X
810 µm	✓	X

Accessories

Differential Pressure Kit

Detects the pressure difference between the inlet and outlet and activates an electrical contact upon reaching a pre-set ΔP value.

- Max pressure: 17 bar
- ΔP range: 0.3 - 2 bar
- Max temperature: 60°C



Threaded Gate valve

Improves the efficacy of the cleaning in harsh operating conditions. Suitable for models with BSP threaded connections.

- Material: Brass
- Nominal Pressure: PN10 - PN16
- Max temperature: 110°C



LUG Butterfly Valve

Improves the efficacy of the cleaning in harsh operating conditions. Suitable for models with flanged connections.

- Valve body: ductile iron
- Disc: AISI 316
- Liner: EPDM
- Max. temperature: 120°C



Spare Parts

Description	Material	Compatibility
Body gasket Ø 219.1	EPDM	Size 6 - Size 8
Filterkit Gasket Kit Ø145, (2pcs)	EPDM	Size 6 - Size 8
Body Gasket Ø273	EPDM	Size 18 - Size 30
Filterkit Gasket Kit Ø218, (2pcs)	EPDM	Size 18 - Size 30
Pressure gauge 0-10 bar G1/4" Ø63	AISI 304	All models
Pressure gauge 0-10 bar G1/4" Ø63	AISI 316	All models
Brush Kit (3pcs)	Nylon	Size 6, 8, 18, 30

